

Technical Support

support@lanpoint.com

Frequently Asked Questions

See our Web site www.lanpoint.com for the answers to frequently asked questions and technical help.

Sample Programs

Sample programs for the LANpoint TIME terminal are located on the overview page of our Web site at <http://www.lanpoint.com/lanpoint-time.html>.

Static Sensitivity

Seller ships all static-susceptible products in anti-static packages. Seller's Warranty as herein set forth shall not cover warranty repair or replacement for products damaged by static due to Buyer's failure to use proper protective procedures when handling, storing, or installing products.

Trademarks

LANpoint Computers®, LANpoint®, TIMEpoint®, Intelligent Instrumentation® are trademarks of Intelligent Instrumentation, Inc. Other products or brand names are trademarks or registered trademarks of their respective companies.

Use of Equipment

Intelligent Instrumentation Inc. assumes no responsibility for any direct, indirect or consequential loss or damages resulting from misuse of the equipment or for improper or inadequate maintenance of the equipment or for any such damage or loss resulting from the use of other equipment, attachments, accessories, and repairs at any time made to or placed upon the equipment or any replacement thereof. Furthermore, Intelligent Instrumentation Inc. makes no representations or warranties, either expressed or implied, in connection with the use of the equipment in the event it is improperly used, repaired or maintained.

Revision History for 855M533

<u>Version</u>	<u>Date</u>	<u>Revision</u>
1.0	120105	Initial Release
1.1	013006	Minor typo correction
1.2	081507	RF Ethernet configuration modifications
1.3	030514	minor WiFi change (no CEFlush req'd)

LANpoint TIME Manuals and SDK

The *LANpoint TIME SDK*, *Installation and Maintenance Manual*, *Developer's Manual*, and this *Quick Start Guide* are available as Adobe Acrobat files on the Web site Download manuals, SDK, and other related material at <http://www.lanpoint.com/downloads.html>

Copyright 2005-2014 Intelligent Instrumentation Incorporated. All rights reserved.

® LANpoint TIME Quick Start Guide



www.lanpoint.com

**INTELLIGENT
INSTRUMENTATION®**

855M533 version 1.3

Getting Started

Unpacking

Using the enclosed packing slip, verify that all of the parts that you ordered are included in the box or boxes. If any items are damaged, contact your sales representative. All LANpoint TIME terminals are factory-tested prior to shipping.

Testing the Terminal:

Test the terminal prior to installation

- Plug the power adapter into a live electrical outlet and into the POWER input connector located on the back of the terminal.
- A checkerboard pattern will be displayed briefly after the backlight comes on, followed by a screen showing the OS version number and the IP address.



LANpoint TIME Successful power-up

How to Configure IP Address & Use the Remote Display Utility

You will need to **temporarily connect an external keyboard** to the LANpoint TIME terminal to do this. Use any keyboard with a PS/2 style connector.

The LANpoint TIME default network configuration is wired Ethernet with DHCP.

An easy way to configure the network and other basic configurable features is to connect to your network via wired Ethernet, and then use the Remote Display utility to access to the LANpoint PLUS' Windows Graphical User Interface.

A utility called *Setup* makes this easy. Some commands are listed here; a full list of *Setup* commands can be found in the *LANpoint TIME Developer's Manual*.

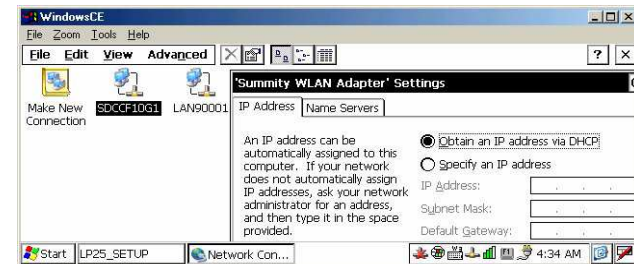
1. To start the *Setup* utility, press F16 (on the integral keyboard, press the 2nd key and release it, then press the F8 key). You will briefly see the *Setup* startup screen, and then you will be prompted for *Setup* commands:



LANpoint TIME Setup Utility Command Screen

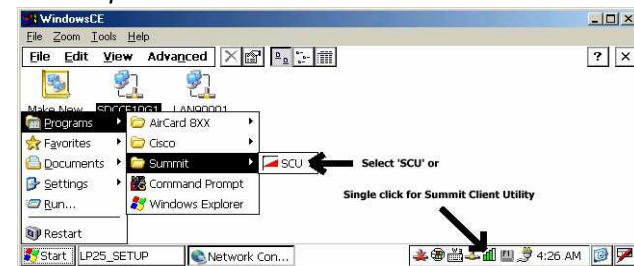
2. If you are using DHCP to automatically set your IP address, skip to step 5. Otherwise, to set a hardcoded IP address, at the *Setup>* prompt type *nixxx.xxx.xxx.xxx* where x = IP address.
3. At the *Setup>* prompt type *nsxxx.xxx.xxx.xxx* where x = subnet mask.
4. At the *Setup>* prompt type *ngxxx.xxx.xxx.xxx* where x = gateway address. Reboot the terminal for the changes to take effect.
5. If you are using wired Ethernet, you are done configuring the IP address. Otherwise, if you are using RF wireless Ethernet, make sure the RF card is installed in the terminal in the PCMCIA slot under the rear cover.

6. Configure the wireless parameters using the remote display utility. First, copy and run the program *CERHOST.EXE* on your development PC connected to your network. *CERHOST.EXE* can be found on the SDK CD, or downloaded at <http://www.lanpoint.com/downloads.html>.
7. With the wired Ethernet cable still attached, repeat step 1. At *Setup>*, type *rdhostxxx.xxx.xxx.xxx* where x = the address of the development PC.
8. At *Setup>*, type *rdstart*.
9. Using the development PC's *CERHOST.EXE* window, go to Start/Settings/Network and Dial-up Connections. In the pop-up dialog, double-click on the SDCCF10G1 icon and configure the IP address and Name Server for the wireless connection.



WLAN IP address Configuration

10. Launch the Summit Client Utility, as shown below, to configure wireless Ethernet parameters. A dialog box will open with tabs for setting parameters such as network SSID, WEP key, data encryption types, and so on. Full instructions are in the *LANpoint TIME Installation and Maintenance Manual*.



WLAN client configuration utility

11. Reboot to test the wireless Ethernet configuration.

Installation

To install the LANpoint TIME terminal, follow the instructions for mounting, connecting cables, and powering the terminal that are found in the *LANpoint TIME Installation and Maintenance Manual*.

LANpoint TIME Manuals and SDK

The *LANpoint TIME SDK*, *Installation and Maintenance Manual*, *Developer's Manual*, and this *Quick Start Guide* are available as Adobe Acrobat files on the Web site Download manuals, SDK, and other related material at <http://www.lanpoint.com/downloads.html>